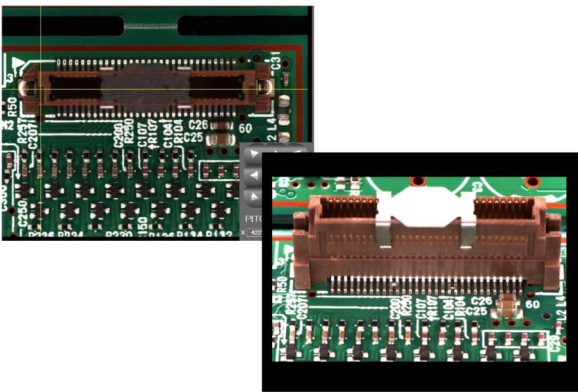
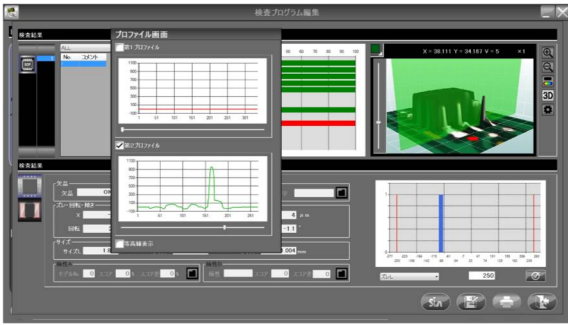


# ISOtor

M1  
M1A



because inspection matters

## Artificial Intelligence Solder Joint AOI

- |  |   |
|--|---|
| ✓ Automatic Full profile 3D and 2D AOI           | 100% 3D + 2D inspection of PCBA   |
| ✓ Super High Speed Inspection                    | 69mm x 69mm (2.72"x2.72") Field of View   |
| ✓ Automatic/Adjustable tolerance settings        | Inspection program can be configured based on IPC610 international standard on certain parameters |
| ✓ Programmer independent solder joint inspection | Easy programming of solder joints by automatic geometrical analysis in 3D                         |
| ✓ 3D & 2D Hybrid Inspection                      | Seamlessly covers any type of inspection criteria   |
| ✓ Multiple side view cameras                     | Inspect solder joints invisible from top  |
| ✓ Decisions based on Artificial Intelligence     | Learn process values, find anomalies based on hundreds of parameters automatically                |
| ✓ Full integration to the FIBER system           | For classification, repair, traceability and SPC  |
| ✓ Offline Programming/Debug Station              | Reliable offline programming, Minimal line down time.   |
| ✓ Massive 25mm (1") component height measurement | Unrivaled range of height measurement.  |



M1  
M1A

because inspection matters

Specifications	ISO-Spector M1 (Inline)	ISO Spector M1A (Inline)
Maximum PCB Size	510mm x 680mm (20" x 26")	350mm x 680mm (14" x 26")
<b>Characteristics</b>		
Product type	Topographical 3D Automatic optical inspection and measurement	
In-line	Inline SMEMA 2.0	
Movement type	Camera X,Y	
PCB movement	Stationary	
PCB fixation	Top Clamping, Pin based PCB support	
Parts inspection	Solder filet, lead open, coplanarity, part missing, skew, polarity, foreign material, OCV, OCR	
3D capture	Multi-source Moiré	
2D capture	Multi angle multi light High intensity LED	
Camera type	25MP (5000 x 5000)	
Camera Field Of View	69mm x 69mm (2.72" x 2.72")	
Lens	High Resolution custom Telecentric	
Side Cameras	No	Yes
<b>Specifications</b>		
Minimum inspection component size	0402 metric (01005")	
Component clearance (top)	+55mm (2.2")	
Component clearance (bottom)	-50 (-2")	
Minimum PCB Size	50x50mm (1.9" x 1.9")	
Warp compensation	±5 mm (± 0.2")	
Inspection capacity typical	3600mm <sup>2</sup> /s in full 3D/2D	
Power	100-240 Vac / 1.5 kVa single phase	
<b>Interfacing</b>		
Control PC type (included)	Industrial grade Windows PC	
Control interface	Custom control card	
<b>General</b>		
Operating temperature	15-35°C (60-95 F)	
Operating humidity	15-85 % RH	
External size	W1070x D1550 x H1500 mm (42" x 61" x 59")	W1070x D1550 x H1500 mm (42" x 61" x 59")
Weight	800kg (1760lbs)	830kg (1830lbs)

Marantz Electronics reserves the right to change the design and specifications without notice. © Mek Europe BV, November 2017

Represented/Distributed by:

Mek Americas LLC  
4425 E Sahara Ave., STE 41  
Las Vegas, NV 89104 USA  
T +1 702 818 1706  
[info@marantz-electronics.com](mailto:info@marantz-electronics.com)  
[www.marantz-electronics.com](http://www.marantz-electronics.com)

**mek**<sup>®</sup>  
marantz electronics ltd  
Marantz Electronics, Ltd.  
4th floor, Hi-Tech Center, YBP, Hodogaya-ku  
Yokohama-city, Kanagawa, 240-0005 Japan

Mek Europe BV  
Polluxstraat 2b  
5047 RB Tilburg, Netherlands  
T +31 40 7114111  
[info@mek-europe.com](mailto:info@mek-europe.com)  
[www.mek-europe.com](http://www.mek-europe.com)